

2019



**SHPE**<sup>SM</sup>  
**Twin Cities**

## Society of Hispanic Professional Engineers Twin Cities Professional Chapter



### OUR FOCUS

- Increase your company's awareness to local Hispanic professionals.
- Increase retention by acclimating new employees to the Twin Cities Hispanic Professional community.
- Develop employees into leaders through professional volunteering and mentorship opportunities.
- Promote company visibility by awarding scholarships to local Hispanics studying Science, Technology, Engineering, Math (STEM) on company's behalf.

Annual  
Corporate  
Sponsorship  
Program



# Society of Hispanic Professional Engineers Twin Cities Professional Chapter

## ABOUT US

The Society of Hispanic Professional Engineers (SHPE) is a national society founded in 1974 to promote the development of Hispanics in the fields of science, technology, engineering, and mathematics (STEM). SHPE's mission is to be the Source for Quality Hispanic Professional Engineers and Technical Talent.

The SHPE Twin Cities Professional Chapter (SHPE-TC) is a non-profit 501c(3) that has served the Twin Cities for over 25 years by promoting personal and professional growth and increasing educational opportunities.

## OUR IMPACT

- Leadership Development
- Professional Networking
- National Exposure
- Community Engagement
- Technical Volunteering
- Career Opportunities
- Scholarships

## CHAPTER PROFILE

- Careers in all areas of STEM
- Over 25 local companies represented

## MEMBER DISCIPLINES

- Aerospace
- Civil
- Mechanical
- Systems
- IT
- Electrical / Computer
- Biomedical
- Industrial / Food
- Chemical



# Society of Hispanic Professional Engineers Twin Cities Professional Chapter

## BENEFITS OF SHPE-TC SPONSORSHIP

Supporting SHPE-TC provides benefits to your corporation:

- Access to Hispanic talent at our professional networking events
- Promotion of your organization as a committed supporter of diverse technical talent
- Retention of new Hispanic employees through acclimation to the local professional community in the Twin Cities
- Free SHPE-TC memberships for your employees
- Scholarship assistance to local Hispanic high school and college students studying STEM fields (merit/need-based)
- Opportunities for leadership experience through numerous volunteering opportunities for members
- Monetary assistance to SHPE-TC professional members for attending leadership conferences and in professional certifications
- Opportunity for your world-class Hispanic leaders to present at local and national leadership development seminars
- Mentoring programs for young STEM professionals



# Society of Hispanic Professional Engineers Twin Cities Professional Chapter

## SPONSORSHIP PACKAGE 2019

	Sponsorship Level				
	Platinum	Gold	Silver	Bronze	Per Event
<b>Sponsorship Funds (minimum)</b> Additional funds will go to scholarships	\$7,500	\$5,000	\$3,000	\$1,500	*
<b>Benefits of Sponsor</b>					
Scholarship awarded in company's behalf	\$3,500	\$2,500	\$2,000	\$1,250	-
Acknowledgement in Sponsors' list	✓	✓	✓	✓	✓
Corporate SHPE Memberships	10	7	5	2	-
Guests at Annual Gala	8 (2 tables)	4 (1 table)	2	1	-
Corporate logo on all electronic communications	✓	✓	✓	✓	-
Access to post on job board	✓ Preferential	✓ Preferential	✓	-	-
Corporate logo on all printed SHPE-TC material	✓	✓	✓	-	-
Opportunity to display corporate banner at SHPE Activities	✓	✓	-	-	-
Annual Gala speaking opportunity	✓	-	-	-	-

### In Kind Sponsorships Available



# Society of Hispanic Professional Engineers Twin Cities Professional Chapter

## APPRECIATION NOTES FROM THE STUDENTS:

### From Deborah Rodriguez:

"Receiving this scholarship has allowed me the opportunity to continue pursuing my double major in Chemistry and Math. With these majors, I hope to acquire a PhD in either Medicinal Chemistry or Chemical Biology so that I may go into the medical field. I will always be grateful for SHPE supporting me in my academic/ career endeavors.

By SHPE giving me this scholarship, the dedication towards engaging and encouraging other Latinos such as myself has been clearly shown. This scholarship made me realize the importance in catalyzing the Latino community to break barriers and to pursue STEM degrees. Representation in this field is necessary and SHPE helps guide us to the forefront of this field through opportunities such as this scholarship."

### From Jose Castillo

"Dear SHPE Corporate Sponsor,

My name is Jose Castillo, and I am a first-year student at Emory University in Atlanta, Georgia. I would like to thank you for helping me pursue a college education. Towards the end of my senior year in high school, due to financial reasons, I had a difficult time deciding where to attend college. During this time, my dream was to go out of state and experience a new community. However, I knew that coming to a school in a different state would place a burden on my family. More specifically, I had a desire to come to Emory University because of its strong pre-health reputation. I am now on a pre-health track studying towards a potential career as a physician assistant or physical therapist. So far, I'm thankful for the opportunities that I have here. I have met several physician assistants and physical therapists and will soon be shadowing a physician assistant. Thanks to Emory's leading healthcare system, I will also start volunteering soon and gaining experience with patients. All of this has been possible thanks to the generous people who have been willing to help financially. I'm thankful to be here, and I'm looking forward to my next few years here. The financial support that I received through SHPE helped me take the opportunity of coming to a top-ranked private institution and without the financial help of others, these opportunities would have not been possible. Once again, thank you so much for your contribution.

Sincerely,

Jose Castillo"



# Society of Hispanic Professional Engineers Twin Cities Professional Chapter

## CORPORATE REGISTRATION FORM

### 1. Company Information

<input type="text"/>	<input type="text"/>	<input type="text"/>
Last Name	First Name	MI

Company/Organization Name

<input type="text"/>	<input type="text"/>	<input type="text"/>
Address	City	Zip Code

<input type="text"/>	<input type="text"/>	<input type="text"/>
Phone	Fax	Email

### 2. Sponsorship Level

- Platinum (\$7,500)
- Gold (\$5,000)
- Silver (\$3,000)
- Bronze (\$1,500)

### 3. Sponsorship Details

The amount of sponsorship I have checked: \$

In-Kind Special Sponsorship Pledge: \$

This donation will be used to help support SHPE-TC. Sponsorship recognition at all events.

Total Amount: \$

Title  Date

Authorized Signature

Checks should be written out to: SHPE-TC  
Please mail (or email) completed form to:  
SHPE-TC Professional Chapter  
P.O. Box 6196  
Minneapolis, MN 55406-0196  
Email: external@shpetwincities.org





# Society of Hispanic Professional Engineers Twin Cities Professional Chapter

## EXECUTIVE BOARD OF DIRECTORS 2018 - 19



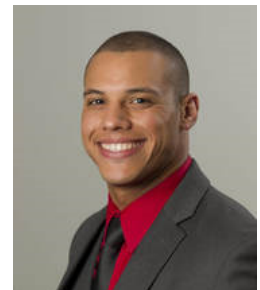
Juana Sandoval  
President



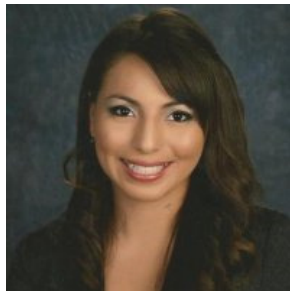
Esther Ledesma  
Vice President



Manuel Millán  
Corporate Relations



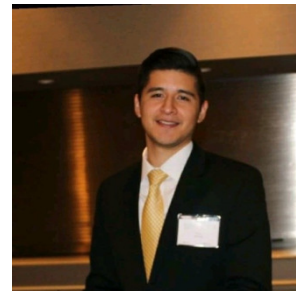
Michael Ruiz  
Secretary



Laura Valencia  
Marketing



Victoria Velez  
Membership



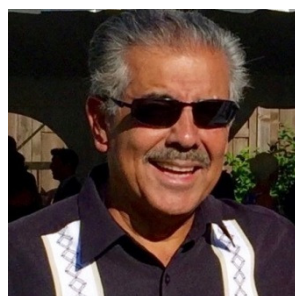
Rey Andrade-Flores  
Treasurer



Nelson Soto  
Professional  
Development



Anita Swanson  
Webmaster



Willy Velarde  
Scholarship



Magdalena Cruz  
Ramirez  
Education Chair

**Network. Promote STEM. Engage your Community.**